

Excavator

DJJ
EQUIPMENT

U18

The Versatile Flexibility Expert

Adaptable choice for diverse tasks.



U18



1880

Operating
Weight(kg)

470

Bucket
Width(mm)

0.05

Capacity(m³)

14.5/20

Engine
Power(kW/HP)

Overall Length(mm)	3690
Overall Width(mm)	1080
Overall Height(mm)	2350
Tail Swing Radius(mm)	700
Length of Track(mm)	1585

Max. Digging Height(mm)	3620
Max. Digging Depth(mm)	2295
Max. Digging Radius(mm)	4125
Max. Digging Radius on Ground(mm)	4060
Max. Dumping Height(mm)	2500
Min. Slewing Radius(mm)	1690
Max. Vertical Digging Depth(mm)	1900

EXTENDED MAINTENANCE INTERVALS

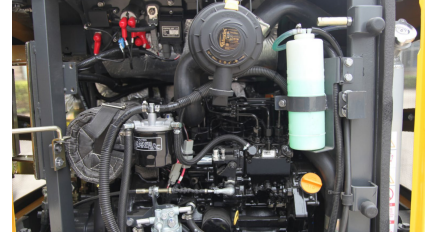
Lubricate Swing Circle	500 hrs
Lubricate Work Equipment	500 hrs
Replace Engine Oil & Filter	500 hrs
Fuel Filter	500 hrs
Hydraulic Filter	1000 hrs

Features

- ✓ PERFORMANCE AND VERSATILITY
- ✓ OPERATOR COMFORT
- ✓ VALUE, DURABILITY AND STRENGTH
- ✓ SERVICE AND MAINTENANCE

PERFORMANCE AND VERSATILITY

- Standard auxiliary hydraulics
- Two track options: rubber, steel
- Two-speed travel
- Expandable undercarriage: 1,080mm to 1,400mm

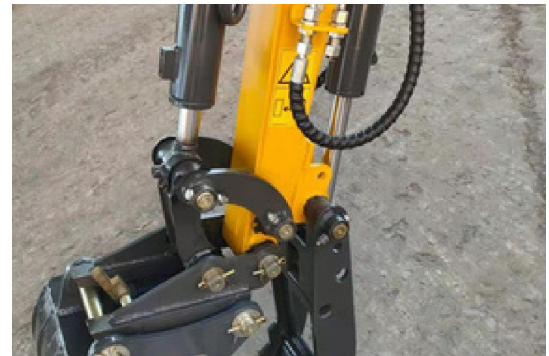


OPERATOR COMFORT

- Large operator platform
- Adjustable suspension seat
- Pilot proportional joystick controls
- Easy to entry and egress
- Low noise

VALUE, DURABILITY AND STRENGTH

- Castings are used for boom foot, tip, and swing yoke
- Large diameter swing pin
- O-ring face seal hydraulic fittings
- Moisture/dust resistant electrical connectors
- Hydraulic lines are routed through boom for protection



PEACE OF MIND

- Large operator platform
- Adjustable suspension seat
- Pilot proportional joystick controls
- Easy to entry and egress



SERVICE AND MAINTENANCE

- Wide opening engine hood and side covers
- Side-by-side radiator and oil cooler are easily inspected
- Easy to access grease points
- Tilt-forward operator's station provides full access to engine and hydraulic components

U18-SPECIFICATION

ENGINE	
Brand	Yanmar
Mode	3TNV76
Type	Vertical Cylinder
Piston Displacement(L)	1.116
Engine Power(kW/rpm)	14.5/2400
OPERATING WEIGHT (APPROX.)	
Operating Weight with Rubber Shoe(kg)	1880
BLADE	
Width * Height(mm)	1080 to 1400 * 145
ELECTRICAL SYSTEM	
Operating Voltage(V)	12
PERFORMANCE	
Traveling Speed(km/h)	4/2
Swing Speed(rpm)	8.5~10.5
Max. Gradeability	30°
Max. Digging Force of Arm(kN)	8.5
Max. Digging Force of Bucket(kN)	15.5
DRIVES AND BRAKES	
Drive Method	Hydrostatic
Type of Travel Brake	Hydraulic Lock
Type of Travel Shoe	Rubber
REFILL CAPACITIES	
Fuel Tank(L)	23
Hydraulic Tank(L)	20



DJJ
EQUIPMENT



Contact Details:

Sales Hotline: 1800 355 388

Sales Email: sales@djjequipment.com.au

After-Sale Service Hotline: 1800 355 388 (press 2)

After-Sale Service Email: service@djjequipment.com.au

www.djjequipment.com.au

Business Hours:

Monday to Friday: 9:00 AM - 5:00 PM Saturday and Sunday: Closed

Office Address/Location:

New South Wales: 100 Derby Street, Silverwater NSW 2128

Western Australia: 56 Clavering Road, Bayswater WA 6053

Queensland: 65-67 Beal Street, Meadowbrook QLD 4131