

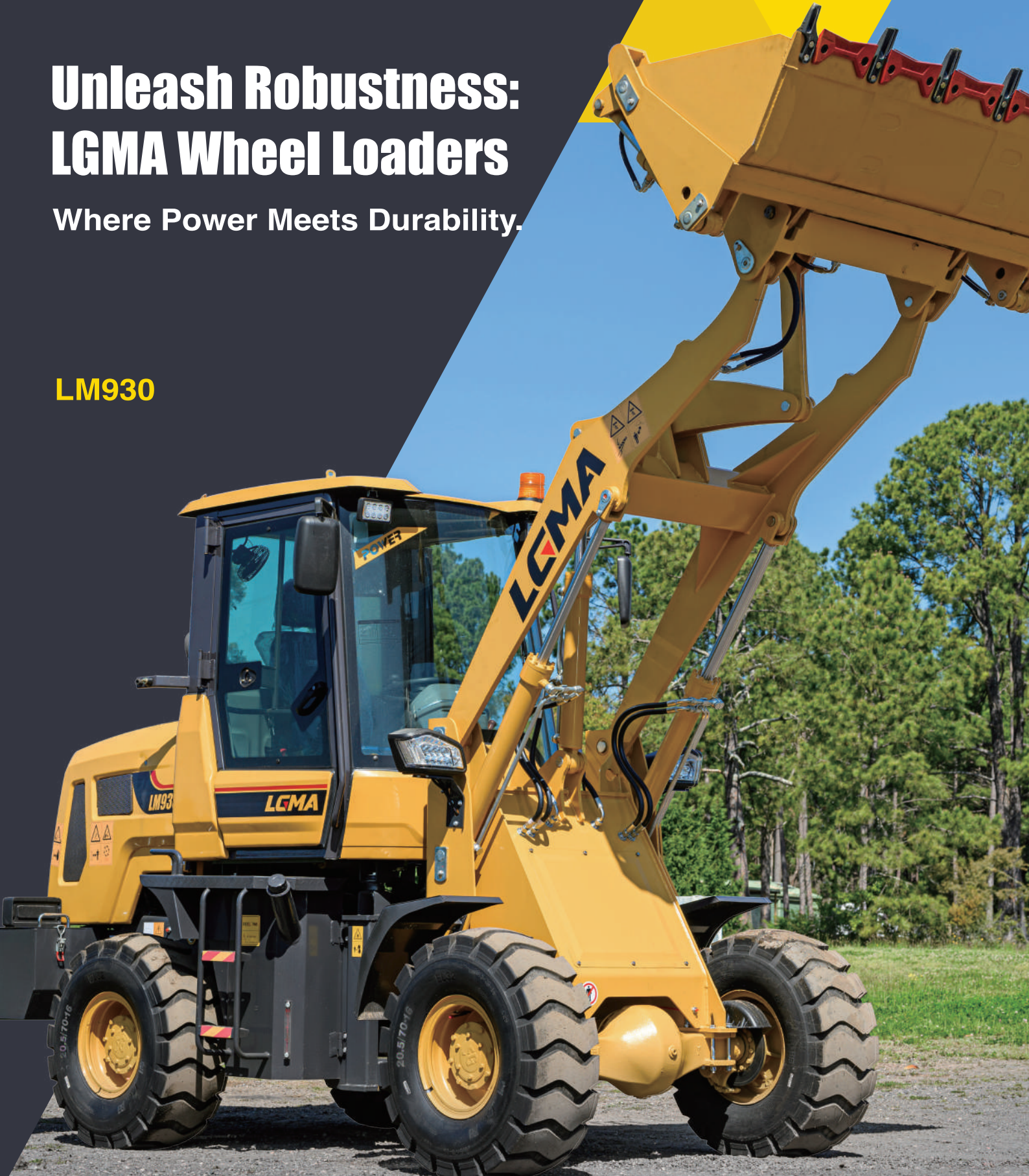
Wheel Loader

DJJ
EQUIPMENT

Unleash Robustness: LGMA Wheel Loaders

Where Power Meets Durability.

LM930





LM930



3800

Operating
Weight(kg)

1600

Rated
Load(kg)

0.80

Bucket
Capacity(m³)

65/87

Engine
Power(kW/HP)

Length(mm)	5500
Width(mm)	1850
Height(mm)	2760
Bucket capacity(m ³)	0.80
Rated load(kg)	1600
Operating weight(kg)	3800
Wheel base(mm)	2250
Wheel track(mm)	1500
Bucket width(mm)	1900
Max.dumping height(mm)	3200
Max.dumping distance(mm)	750
Turning radius(mm)	4900

Standard Attachment

GP Bucket

Optional Attachments

4 in 1 Bucket
Pallet Fork
Bale/Hay Fork
Stick Rake
Slasher
Sieve Bucket

Log Grapple
Auger
Bale Grapple
Claw Grapple
Rake Bucket
Grapple Bucket

Sweeper
Angle Tilt Blade
Dozer Blade
Adjustable Jib
.....

LM930-SPECIFICATION

ENGINE

Model	WEICHAI Huafeng 4102 diesel
Pattern	In-line, 4 cylinder
Rated power(kW) / speed	65 / 2400
Weight(kg)	340

DRIVES AND BRAKES

Service brake	Air hydraulic disc brake
Parking brake	Hand brake

ELECTRICAL SYSTEM

Operating voltage(V)	24
----------------------	----

UNDERCARRIAGE

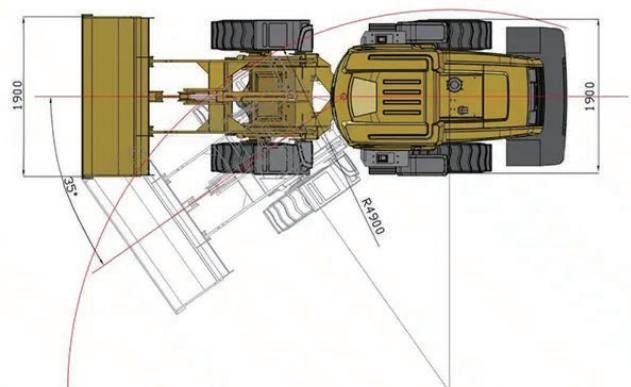
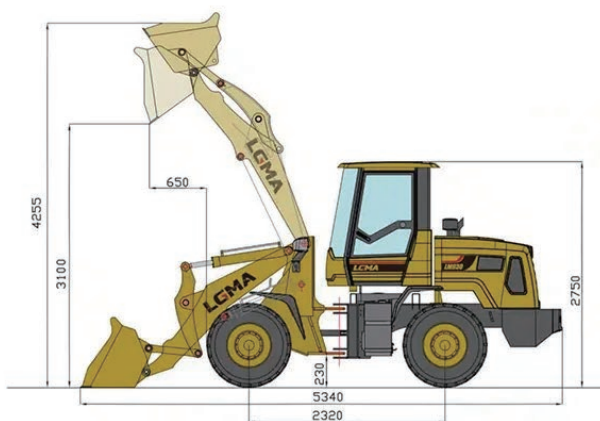
Tyre	20.5 / 70-16
------	--------------

HYDRAULIC SYSTEM

Operating type	Hydraulic
Lifting time(s)	5
Falling time(s)	4

TRANSMISSION

Type	Hydraulic torque converter
Pattern	Automatic
Gear shift	Double H / L
Axle	AWD, small hub reduction



Features

WHEEL LOADER



Dynamic 4 & 4 Speed Transmission

Engineered for versatility, our wheel loaders offer high-speed efficiency for brisk operation and low-speed precision for meticulous tasks, boosting overall control and productivity on the job site.

Rear Engine Cover with Metal Mesh

The rear engine cover features a large-hole metal mesh for efficient cooling while protecting the internal structure from damage.



Climate-Controlled A/C

Operator comfort is paramount in any climate, which is why our heat and cool air conditioning system maintains an ideal cabin temperature, promoting a focused and efficient work environment.

High-Definition Rear Camera

Maneuver with confidence using the HD Rear Camera, which provides expanded visibility, increases safety during reverse operations, and significantly lowers accident risks.



Ergonomic Suspension Seat

Designed to mitigate vibrations and soften impacts, the suspension seat offers unparalleled comfort, diminishing operator fatigue and elevating productivity through extended use.

Optimized High Departure Angles

Navigate complex terrains and tackle obstacles with ease. Our wheel loaders' high departure angles minimize the likelihood of hang-ups, assuring smooth, uninterrupted operation.





Patented Axles

Features a higher speed ratio (7:41) for strong power; uses large wheel-side reduction for increased speed and exceptional torque. Paired with our gearbox, it offers efficiency and low fuel usage.

Body Construction

Advanced stretch stamping gives it a streamlined look and spacious interior. The full metal exterior is heat-resistant and improves cooling.



Hydraulic Hose Configuration

Utilizes premium rubber hydraulic hoses with special H-type fittings, meeting stringent German Parker standards to effectively prevent leaks.

Tank Design

The fuel tank undergoes acid washing and phosphating to prevent clogging with impurities, ensuring the hydraulic system runs smoothly. The strategically placed filler cap under the foot pedal enhances protection and accessibility.



Enhanced Cabin Design

Rectangular frame for rollover and debris protection, curved windshield for better visibility, and NVH upgrades for a quieter, more comfortable workspace.

Advanced Cooling System

The cooling system uses a novel rear frame design, aligning the fan and engine to boost efficiency and accommodate a larger radiator. Equipped with a dual-layer radiator and enlarged 32mm pipes, it prevents clogs and enhances cooling performance.



Brake System Enhancement

The brake system features two independent, parallel brake lines connected to an air booster pump, controlling front and rear axle brakes separately for increased safety.



Air Tank Quick-Connect

The air tank is equipped with a quick-connect fitting, allowing for easy connection to other tools for maintenance and service tasks.

Integrated Pump-Valve Design

Featuring a unified design for the working pump and priority steering valve without intermediate hydraulic hoses, this approach enhances safety, boosts performance, and prevents loss of hydraulic power.



Enhanced Muffer Insulation

The muffer is fully wrapped with thermal insulation to prevent high-temperature burns, protect nearby components from heat damage, and slow down aging.

LCD Display

Equipped with an advanced LCD display, it offers a built-in timer and detailed, high-definition parameter monitoring for real-time operational efficiency and maintenance insights.



Your Trusted Machinery Dealer in Australia.





DJJ **EQUIPMENT**



Contact Details:

Sales Hotline: 1800 355 388

Sales Email: sales@djjequipment.com.au

After-Sale Service Hotline: 1800 355 388 (press 2)

After-Sale Service Email: service@djjequipment.com.au

www.djjequipment.com.au

Business Hours:

Monday to Friday: 9:00 AM - 5:00 PM Saturday and Sunday: Closed

Office Address/Location:

New South Wales: 100 Derby Street, Silverwater NSW 2128

Western Australia: 56 Clavering Road, Bayswater WA 6053

Queensland: 65-67 Beal Street, Meadowbrook QLD 4131