

# Wheel Loader

---

**DJJ**  
EQUIPMENT

## Unleash Robustness: LGMA Wheel Loaders

Where Power Meets Durability.

**LM940**





## LM940



**6500**

Operating  
Weight(kg)

**2500**

Rated  
Load(kg)

**1.3**

Bucket  
Capacity(m<sup>3</sup>)

**85/114**

Engine  
Power(kW/HP)

|                                  |      |
|----------------------------------|------|
| Length(mm)                       | 6700 |
| Width(mm)                        | 2150 |
| Height(mm)                       | 2950 |
| Bucket capacity(m <sup>3</sup> ) | 1.3  |
| Rated load(kg)                   | 2500 |
| Operating weight(kg)             | 6500 |
| Wheel base(mm)                   | 2710 |
| Wheel track(mm)                  | 1680 |
| Bucket width(mm)                 | 2200 |
| Max.dumping height(mm)           | 3800 |
| Max.dumping distance(mm)         | 800  |
| Turning radius(mm)               | 6000 |

### Standard Attachment

GP Bucket

### Optional Attachments

4 in 1 Bucket  
Pallet Fork  
Bale/Hay Fork  
Stick Rake  
Slasher  
Sieve Bucket

Log Grapple  
Auger  
Bale Grapple  
Claw Grapple  
Rake Bucket  
Grapple Bucket

Sweeper  
Angle Tilt Blade  
Dozer Blade  
Adjustable Jib  
.....



## LM940-SPECIFICATION

### ENGINE

|                         |                     |
|-------------------------|---------------------|
| Model                   | Yuchai 4105T        |
| Pattern                 | In-line, 4 cylinder |
| Rated power(kW) / speed | 85 / 2600           |
| Weight(kg)              | 420                 |

### DRIVES AND BRAKES

|               |                          |
|---------------|--------------------------|
| Service brake | Air hydraulic disc brake |
| Parking brake | Hand brake               |

### ELECTRICAL SYSTEM

|                      |    |
|----------------------|----|
| Operating voltage(V) | 24 |
|----------------------|----|

### UNDERCARRIAGE

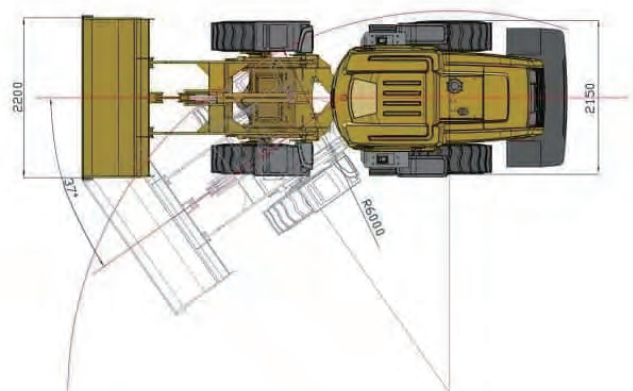
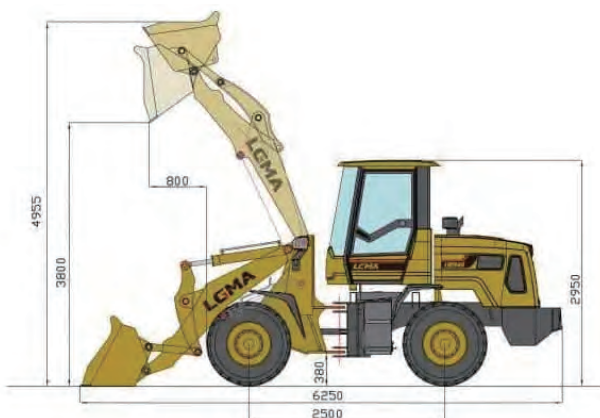
|      |            |
|------|------------|
| Tyre | 16 / 70-24 |
|------|------------|

### HYDRAULIC SYSTEM

|                 |           |
|-----------------|-----------|
| Operating type  | Hydraulic |
| Lifting time(s) | 6.5       |
| Falling time(s) | 5.5       |

### TRANSMISSION

|            |                            |
|------------|----------------------------|
| Type       | Hydraulic torque converter |
| Pattern    | Automatic                  |
| Gear shift | Double H / L               |
| Axle       | AWD, LG28 hub reduction    |



# Features

# WHEEL LOADER



## Dynamic 4 & 4 Speed Transmission

Engineered for versatility, our wheel loaders offer high-speed efficiency for brisk operation and low-speed precision for meticulous tasks, boosting overall control and productivity on the job site.

## Display

Designed for clarity and practicality, the user-friendly display provides essential operational information and maintenance reminders at a glance. Its simple interface ensures reliability, durability, and cost-efficiency—ideal for everyday industrial use.



## Climate-Controlled A/C

Operator comfort is paramount in any climate, which is why our heat and cool air conditioning system maintains an ideal cabin temperature, promoting a focused and efficient work environment.

## High-Definition Rear Camera

Maneuver with confidence using the HD Rear Camera, which provides expanded visibility, increases safety during reverse operations, and significantly lowers accident risks.



## Ergonomic Suspension Seat

Designed to mitigate vibrations and soften impacts, the suspension seat offers unparalleled comfort, diminishing operator fatigue and elevating productivity through extended use.

## Optimized High Departure Angles

Navigate complex terrains and tackle obstacles with ease. Our wheel loaders' high departure angles minimize the likelihood of hang-ups, assuring smooth, uninterrupted operation.





### Enhanced Triple Layers Articulating Hinge

Our wheel loaders are designed with a robust triple-layered articulating hinge, boosting stability and strength. This feature ensures effortless handling of heavy loads and adaptability to tough conditions, guaranteeing enduring reliability and peak performance.

### Patented Axles

Features a higher speed ratio (7:41) for strong power; uses large wheel-side reduction for increased speed and exceptional torque. Paired with our gearbox, it offers efficiency and low fuel usage.



### Body Construction

Advanced stretch stamping gives it a streamlined look and spacious interior. The full metal exterior is heat-resistant and improves cooling.

### Hydraulic Hose Configuration

Utilizes premium rubber hydraulic hoses with special H-type fittings, meeting stringent German Parker standards to effectively prevent leaks.



### Tank Design

The fuel tank undergoes acid washing and phosphating to prevent clogging with impurities, ensuring the hydraulic system runs smoothly. The strategically placed filler cap under the foot pedal enhances protection and accessibility.

### Enhanced Cabin Design

Rectangular frame for rollover and debris protection, curved windshield for better visibility, and NVH upgrades for a quieter, more comfortable workspace.



### Advanced Cooling System

The cooling system uses a novel rear frame design, aligning the fan and engine to boost efficiency and accommodate a larger radiator. Equipped with a dual-layer radiator and enlarged 32mm pipes, it prevents clogs and enhances cooling performance.



### Brake System Enhancement

The brake system features two independent, parallel brake lines connected to an air booster pump, controlling front and rear axle brakes separately for increased safety.

### Air Tank Quick-Connect

The air tank is equipped with a quick-connect fitting, allowing for easy connection to other tools for maintenance and service tasks.



### Integrated Pump-Valve Design

Featuring a unified design for the working pump and priority steering valve without intermediate hydraulic hoses, this approach enhances safety, boosts performance, and prevents loss of hydraulic power.

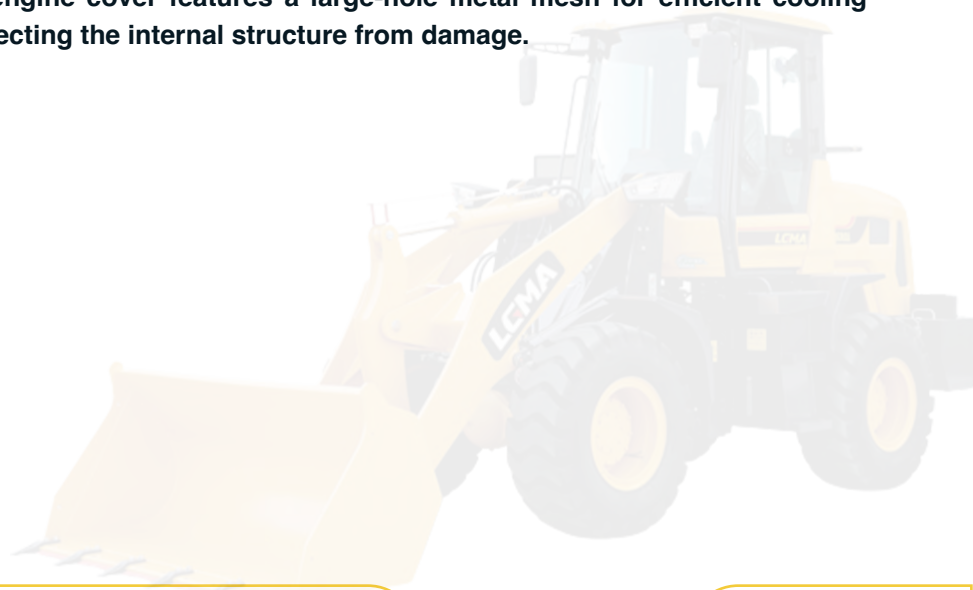
### Enhanced Muffler Insulation

The muffler is fully wrapped with thermal insulation to prevent high-temperature burns, protect nearby components from heat damage, and slow down aging.



### Rear Engine Cover with Metal Mesh

The rear engine cover features a large-hole metal mesh for efficient cooling while protecting the internal structure from damage.





# Attachments

# WHEEL LOADER



**GP Bucket**



**4-in-1 Bucket**



**Pallet Fork**



**Sieve Bucket**



**Light Material Bucket**



**Grapple Bucket**



**Stick Rake**



**Adjustable Jib**



**Dozer Blade**



**Claw Grapple**



**Log Grapple**



**Auger**



**Hay Fork**



**Slasher**



**Rake Bucket**



**Mulcher**





#### **Contact Details:**

Sales Hotline: 1800 355 388

Sales Email: [sales@djjequipment.com.au](mailto:sales@djjequipment.com.au)

After-Sale Service Hotline: 1800 355 388 (press 2)

After-Sale Service Email: [service@djjequipment.com.au](mailto:service@djjequipment.com.au)

[www.djjequipment.com.au](http://www.djjequipment.com.au)

#### **Business Hours:**

Monday to Friday: 9:00 AM - 5:00 PM Saturday and Sunday: Closed

#### **Office Address/Location:**

New South Wales: 100 Derby Street, Silverwater NSW 2128

Western Australia: 56 Clavering Road, Bayswater WA 6053

Queensland: 65-67 Beal Street, Meadowbrook QLD 4131