

Wheel Loader

DJJ
EQUIPMENT

Unleash Robustness: LGMA Wheel Loaders

Where Power Meets Durability.

LM946





LM946



8200

Operating Weight(kg)

2800

Rated Load(kg)

1.5

Bucket Capacity(m³)

92/123

Engine Power(kW/HP)

Length(mm)	6820
Width(mm)	2130
Height(mm)	3040
Bucket capacity(m ³)	1.5
Rated load(kg)	2800
Operating weight(kg)	8200
Wheel base(mm)	2710
Wheel track(mm)	1690
Bucket width(mm)	2400
Max.dumping height(mm)	3800
Max.dumping distance(mm)	650
Turning radius(mm)	6000

Standard Attachment

GP Bucket

Optional Attachments

4 in 1 Bucket	Log Grapple	Sweeper
Pallet Fork	Auger	Angle Tilt Blade
Bale/Hay Fork	Bale Grapple	Dozer Blade
Stick Rake	Claw Grapple	Adjustable Jib
Slasher	Rake Bucket
Sieve Bucket	Grapple Bucket	

LM946-SPECIFICATION

ENGINE

Model	Weichai Deutz WP6G125
Pattern	In-line, 6 cylinder
Rated power(kW) / speed	92 / 2200
Weight(kg)	650

DRIVES AND BRAKES

Service brake	Air hydraulic disc brake
Parking brake	Hand brake

ELECTRICAL SYSTEM

Operating voltage(V)	24
----------------------	----

UNDERCARRIAGE

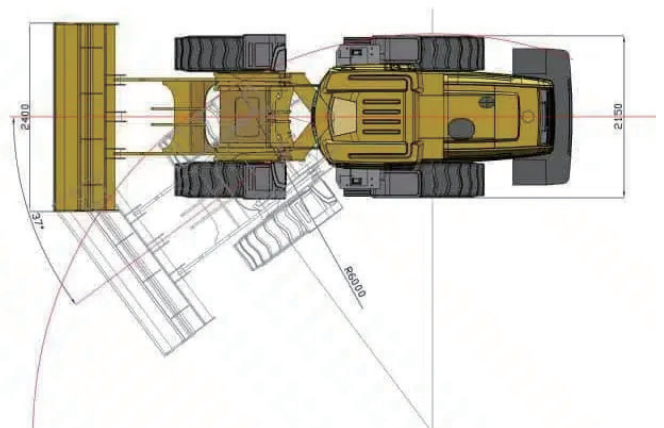
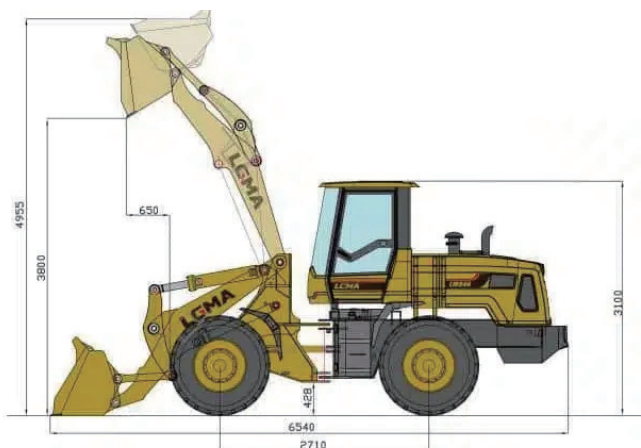
Tyre	17.5-25
------	---------

HYDRAULIC SYSTEM

Operating type	Hydraulic
Lifting time(s)	6.5
Falling time(s)	5.5

TRANSMISSION

Type	Hydraulic torque converter
Pattern	Automatic
Gear shift	Double H / L
Axle	AWD, 2.8T hub reduction



Features

WHEEL LOADER



Dynamic 4 & 4 Speed Transmission

Engineered for versatility, our wheel loaders offer high-speed efficiency for brisk operation and low-speed precision for meticulous tasks, boosting overall control and productivity on the job site.

Display

Designed for clarity and practicality, the user-friendly display provides essential operational information and maintenance reminders at a glance. Its simple interface ensures reliability, durability, and cost-efficiency—ideal for everyday industrial use.



Climate-Controlled A/C

Operator comfort is paramount in any climate, which is why our heat and cool air conditioning system maintains an ideal cabin temperature, promoting a focused and efficient work environment.

High-Definition Rear Camera

Maneuver with confidence using the HD Rear Camera, which provides expanded visibility, increases safety during reverse operations, and significantly lowers accident risks.



Ergonomic Suspension Seat

Designed to mitigate vibrations and soften impacts, the suspension seat offers unparalleled comfort, diminishing operator fatigue and elevating productivity through extended use.

Optimized High Departure Angles

Navigate complex terrains and tackle obstacles with ease. Our wheel loaders' high departure angles minimize the likelihood of hang-ups, assuring smooth, uninterrupted operation.





Enhanced Triple Layers Articulating Hinge

Our wheel loaders are designed with a robust triple-layered articulating hinge, boosting stability and strength. This feature ensures effortless handling of heavy loads and adaptability to tough conditions, guaranteeing enduring reliability and peak performance.

Patented Axles

Features a higher speed ratio (7:41) for strong power; uses large wheel-side reduction for increased speed and exceptional torque. Paired with our gearbox, it offers efficiency and low fuel usage.



Body Construction

Advanced stretch stamping gives it a streamlined look and spacious interior. The full metal exterior is heat-resistant and improves cooling.

Hydraulic Hose Configuration

Utilizes premium rubber hydraulic hoses with special H-type fittings, meeting stringent German Parker standards to effectively prevent leaks.



Tank Design

The fuel tank undergoes acid washing and phosphating to prevent clogging with impurities, ensuring the hydraulic system runs smoothly. The strategically placed filler cap under the foot pedal enhances protection and accessibility.

Enhanced Cabin Design

Rectangular frame for rollover and debris protection, curved windshield for better visibility, and NVH upgrades for a quieter, more comfortable workspace.



Advanced Cooling System

The cooling system uses a novel rear frame design, aligning the fan and engine to boost efficiency and accommodate a larger radiator. Equipped with a dual-layer radiator and enlarged 32mm pipes, it prevents clogs and enhances cooling performance.



Brake System Enhancement

The brake system features two independent, parallel brake lines connected to an air booster pump, controlling front and rear axle brakes separately for increased safety.

Air Tank Quick-Connect

The air tank is equipped with a quick-connect fitting, allowing for easy connection to other tools for maintenance and service tasks.



Integrated Pump-Valve Design

Featuring a unified design for the working pump and priority steering valve without intermediate hydraulic hoses, this approach enhances safety, boosts performance, and prevents loss of hydraulic power.

Enhanced Muffler Insulation

The muffler is fully wrapped with thermal insulation to prevent high-temperature burns, protect nearby components from heat damage, and slow down aging.



Rear Engine Cover with Metal Mesh

The rear engine cover features a large-hole metal mesh for efficient cooling while protecting the internal structure from damage.



Attachments

WHEEL LOADER





DJJ
EQUIPMENT



Contact Details:

Sales Hotline: 1800 355 388

Sales Email: sales@djjequipment.com.au

After-Sale Service Hotline: 1800 355 388 (press 2)

After-Sale Service Email: service@djjequipment.com.au

www.djjequipment.com.au

Business Hours:

Monday to Friday: 9:00 AM - 5:00 PM Saturday and Sunday: Closed

Office Address/Location:

New South Wales: 100 Derby Street, Silverwater NSW 2128

Western Australia: 56 Clavering Road, Bayswater WA 6053

Queensland: 65-67 Beal Street, Meadowbrook QLD 4131