

Excavator

DJJ
EQUIPMENT

YC60

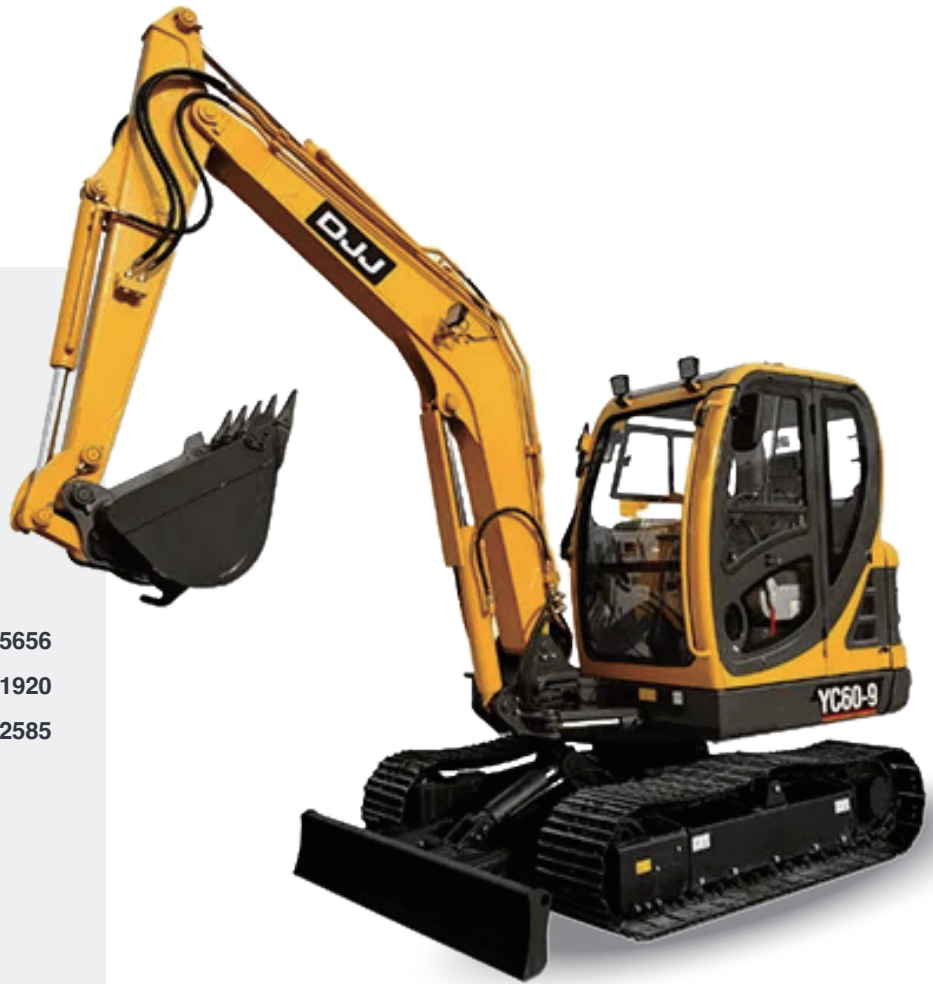
The Heavy-Duty Task Master

Heavy-Duty Expert for Complex Operations.





YC60



Length(mm)	5656
Width(mm)	1920
Height(mm)	2585

Features

- Kubota V2403 Engine: Efficiency and Power Refined
- Swing Boom: Enhanced Agility for Precision Work
- Zero Tail Swing: Superior Control in Tight Quarters
- Quick Hitch: Optimize Time and Safety
- ROPS/FOPS Certified: Your Fortress of Safety
- Pilot Control: Precision at Your Fingertips
- Upgraded Hydraulic System: Peak Performance
- Robust Traction: Power to Climb

Attachments

- Mechanical Quick Hitch
- 300mm Trench Bucket
- 450mm GP Bucket
- 900mm Mud Bucket

5700

Operating Weight(kg)

0.21

Capacity(m³)

30.7/42

Engine Power(kW/HP)

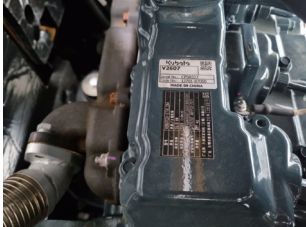
YC60

SPECIFICATION

Engine Model	V2403
Traveling Speed(km/h)	22.2/3.6
Slewing Speed(rpm)	9-11
Max Gradeability(°)	35
Max Hauling(Tracttion) Force (kN)	46.5
Tail Slewing Radius(mm)	1520
Track Gauge(mm)	1960
Length of Track on Ground(mm)	2494
Digging Force of Bucket(kN)	36.6
Digging Force of Stick(kN)	27.5
Max Digging Reach(mm)	5945
Max Digging Radius(mm)	6065
Max Digging Depth(mm)	3720
Max Dumping Height(mm)	4040
Max Digging Height(mm)	5740

Features

EXCAVATOR



Kubota Engine

Harness the reliability of an imported Kubota engine delivering 30.7 at 2200rpm. Expect lower fuel consumption and noise levels, full-throttle power, and eco-friendly operations that comply with stringent emission standards.

Swing Boom

Our innovative swing boom design allows for left and right deflection, granting exceptional control and precision in movement, crucial for complex tasks and crowded job sites.

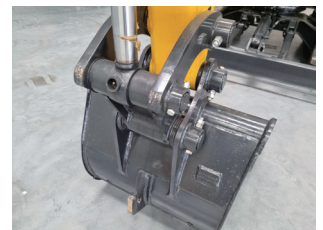


Zero Tail Swing

Maximize your productivity with zero tail swing that significantly reduces the risk of bumps and scrapes, making it ideal for tight spots and delicate operations.

Quick Hitch

Streamline your workflow with a quick hitch system that promises not only improved efficiency but also increased versatility and heightened safety, all while being cost-effective.



ROPS/FOPS Certified

This machinery meets ROPS and FOPS standards, offering robust protection against rollovers and aerial hazards, ensuring your safety on the job.



Dual Travel Speed

Our dual travel speed setting empowers operators with enhanced flexibility, ensuring you move with efficiency across diverse job sites.

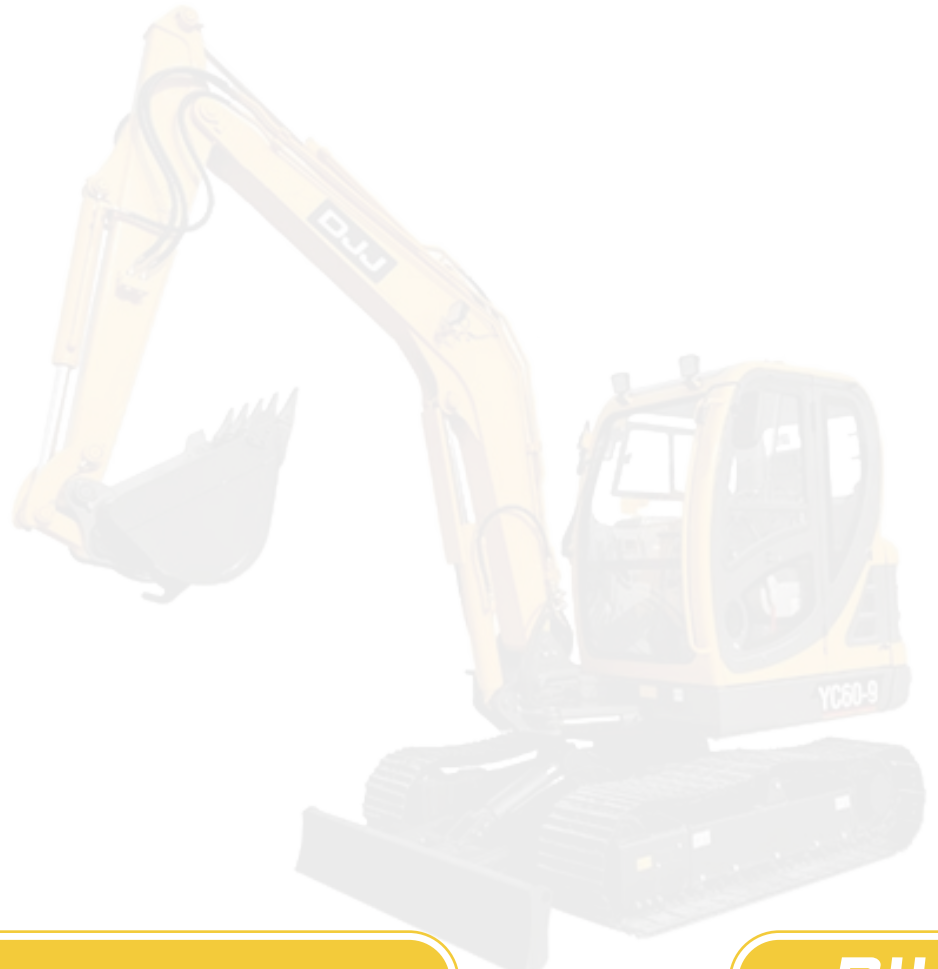
Pilot Control

Pilot controls offer a comfortable driving experience with smooth, precise movements, reducing operator fatigue and enhancing productivity.



Upgraded Hydraulic System

Leverage the advanced capabilities of a three-pump system imported from Japan, complete with an arm regenerative circuit. Expect stable, coordinated actions and high reliability even in the most demanding tasks.



Your Trusted Machinery Dealer in Australia.

DJJ
EQUIPMENT



DJJ
EQUIPMENT



Contact Details:

Sales Hotline: 1800 355 388

Sales Email: sales@djjequipment.com.au

After-Sale Service Hotline: 1800 355 388 (press 2)

After-Sale Service Email: service@djjequipment.com.au

www.djjequipment.com.au

Business Hours:

Monday to Friday: 9:00 AM - 5:00 PM Saturday and Sunday: Closed

Office Address/Location:

New South Wales: 100 Derby Street, Silverwater NSW 2128

Western Australia: 56 Clavering Road, Bayswater WA 6053

Queensland: 65-67 Beal Street, Meadowbrook QLD 4131