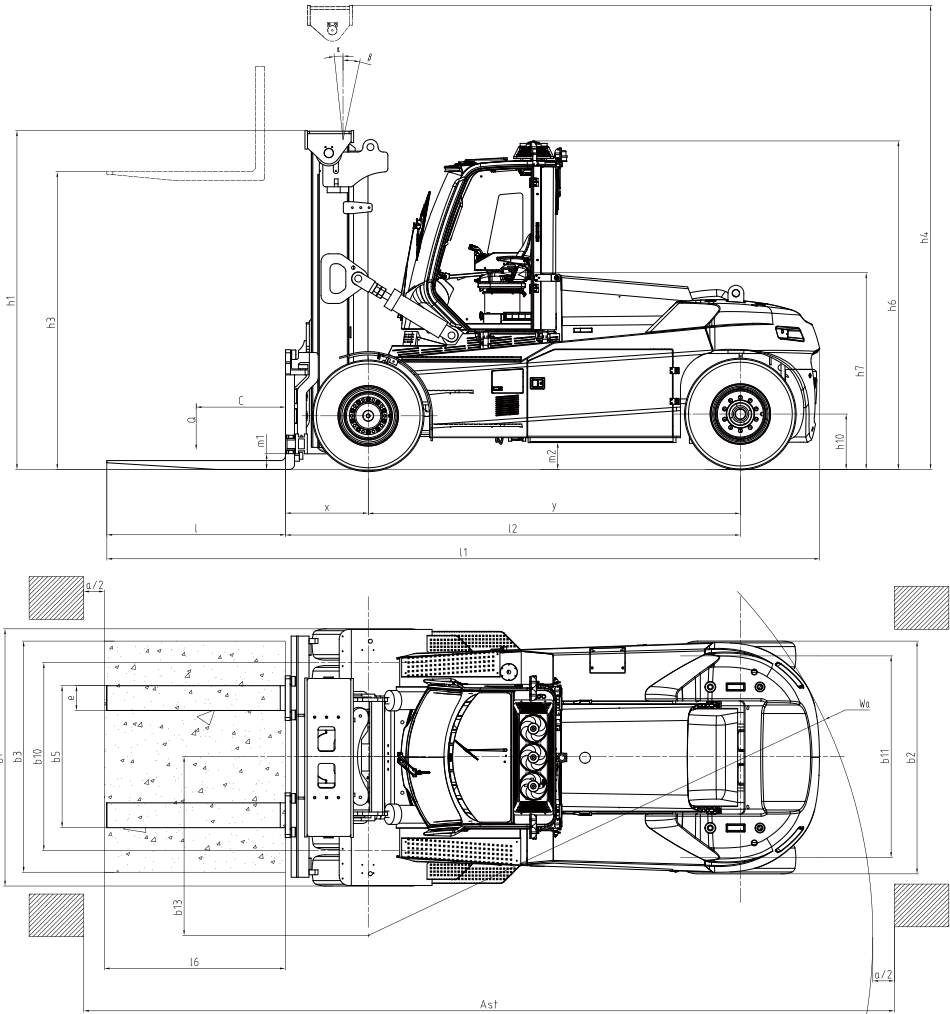
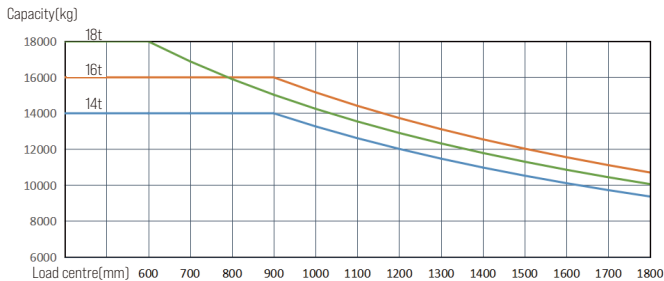


14-18t Mast Specification

Type	Model	Lifting height	Overall height		Tilt range	Capacity		
			Lowered	Extended	F/R	Load center@900mm		Load center@600mm
						14t	16t	
2-stage wide view mast		mm	mm	mm	[°]	kg	kg	kg
	GXR160/X180M300	3000	3300	4800	6/12	14000	16000	18000
	GXR160/X180M330	3300	3450	5100	6/12	14000	16000	18000
	GXR160/X180M360	3600	3600	5400	6/12	14000	16000	18000
	GXR160/X180M400	4000	3800	5800	6/12	14000	16000	18000
	GXR160/X180M430	4300	4000	6150	6/12	14000	16000	18000
	GXR160/X180M450	4500	4100	6350	6/12	14000	16000	18000
	GXR160/X180M480	4800	4250	6650	6/6	14000	16000	18000
	GXR160/X180M500	5000	4350	6850	6/6	14000	16000	18000
	GXR160/X180M550	5500	4650	7400	3/6	12500	14500	16500
	GXR160/X180M600	6000	4900	7900	3/6	11000	13000	15000
	GXR160/X180M650	6500	5200	8450	3/6	9500	11500	13500



As1=L6+Wg+Vg L6: load length a: Clearance (200mm)



HANGCHA GROUP CO., LTD.

Factory site: 666 Xiangfu Road,
Hangzhou, Zhejiang, China (311305)

Tel: +86-571-88926735 88926755
Fax: +86-571-88926789 88132890

sales@hcforklift.com
www.hcforklift.com

Follow us on Facebook

Follow us on YouTube

Follow us on WeChat

Download "Hangcha Forklift" App

ISO 45001:2018

ISO 14001:2015

ISO 9001:2015

HANGCHA trucks conform to the European Safety Requirements.

2023 VERSION 2/01/P/RIGHT 2023/11

HANGCHA GROUP CO., LTD. reserves the right to make any changes without notice concerning colors, equipment, or specifications detailed in this brochure, or to discontinue individual models. The colors of trucks, delivered may differ slightly from those in brochures.



XH SERIES HIGH-VOLTAGE LITHIUM BATTERY FORKLIFT

with capacity of 12,000 to 18,000kg



The World of Hangcha



XH SERIES HIGH-VOLTAGE LITHIUM BATTERY FORKLIFT

XH series high-voltage lithium battery forklifts are new series of high-voltage lithium battery forklifts independently developed by Hangcha relying on the new energy automobile voltage platform for the first time based on the deep understanding of electric forklifts and internal combustion forklifts for decades by breaking through the traditional design concept. The series of models redefine electric forklifts in terms of efficiency, power and reliability, and replace the internal combustion with electric forklifts.

VOLTAGE

608 V

SPEED MODELS

3 S/P/E mode
[Super/Power/Eco]

VEHICLE WATER RESISTANCE

IPX4

TRAVEL SPEED

28km/h

CHARGING TIME (20-100%)

1.3Hour

PROTECTION RATE

IP67

Exterior

/ Following the appearance of X series internal combustion forklifts, the series boast smooth and powerful contour lines, and exquisite and compact vehicle body, presenting both fashion and steadiness as a whole.

THE *Plus*
FOR YOUR
BUSINESS



FASTER & MORE EFFICIENCY.

Fast charging makes it possible for the whole vehicle to work continuously, shortening the waiting time and greatly improving efficiency.

4000 » 
CYCLES OF CHARGING 75% LI-ION

Under normal charging and discharging conditions, the lithium battery of Hangcha products has a capacity retention rate of more than 75% and a life span of up to 10 years after 4000 cycles of charging and discharging.

Through disruptive battery and fast charging technology, the charging time is greatly shortened.

HIGH-VOLTAGE

184kWh

Battery capacity



EXCELLENT ERGONOMIC DESIGN

Comfort

- / The wide-view mast with optimized design is unlikely to obstruct the operator's line of sight. The enlarged opening size of the fork carriage enables a wider view, a large operation space, and excellent ergonomic design.
- / The multifunctional color-screen instruments are designed to have graphical interfaces and display data clearly. The interfaces can be switched to be shown in Chinese and English to meet the needs of customers at home and abroad.
- / The new fully-suspended cab with panoramic view enables a clearer view. Performance of the air conditioner is improved to enable uniform conditioned air blowing from the air outlet and a strong cooling effect. The waterproof, dust-proof, heatproof, soundproof, noise-reducing sealing design improves driving comfort. The molded interior parts enable a more comfortable feel. The integral frame is constituted by profiled steel pipes. The structural parts have higher strength.
- / Integrated handle and pilot remote control allow flexible and accurate operation; hydraulic brake curve is optimized to achieve smooth and easy-to-control braking; suspension seat, following the floating multi-direction adjustable control platform, is comfortable to control.



Intelligent

- / A vehicle central controller is provided, which has bus architecture, several built-in diagnosis and management functions and a central fault alarm function.
- / An optional intelligent management system is provided to enable intelligent remote monitoring and easier equipment management and logistics management.





Advancement

- / Both the drive and operating systems are vehicle-grade permanent magnet synchronization systems. The driving speed, upslope degree and acceleration performance rival that of internal combustion vehicles, and the environmental performance is better than that of internal combustion vehicles.
- / The vehicle's 541V high-voltage platform, equipped with a heavy truck water-cooled standard box, features better heat dissipation, longer endurance mileage and more durable battery.
- / This is the first time that the electric control and motor adopt water-cooled control mode, which obtains better heat dissipation, allows long-term and high-intensity work exactly like an internal combustion forklift.
- / The vehicle adopts a whole machine controller to redeploy the traction integrated controller (PDU+DC/DC+MCU) and two-in-one oil pump controller to form an intelligent driving system, being light-weighted, efficient and independent.



Safety

- / The cover of the vehicle is designed to be sealed to the water resistance level of IPX4. All the motor, electronic controls and high-voltage components reach the dust and water resistance level of IP67, a high protection level adequate to withstand harsh operating environments and ensure safety and reliability.
- / The electrical system is equipped with high-voltage interlocks, insulation detection, and vehicle-grade safety means. The MSD (Manual Service Disconnect)maintenance switch enables one-click power-down and safer maintenance.
- / Some key structural parts have been verified highly reliable by the market for many years while being used by internal combustion forklifts.



Maintainability

- / The over-turnable cab and electric tipping cylinder make tipping easier and more labor-saving.
- / The wide-opened hood better facilitate repair and maintenance of electrical components.

Optional battery list

Capacity/voltage	541/228 V/Ah	541/456 V/Ah	608/302 V/Ah
12-16t	●		○
14-18t		○	●

Note: ● Standard battery capacity; ○ Optional battery capacity;

Standard Specification

- / Duplex mast
- / Standard lifting height
- / Standard fork
- / Hydraulic fork positioning
- / Independently-adjustable fork(12-16t)
- / Standard color
- / Vehicle toolkit
- / Pneumatic tyre
- / Fully hydraulic power steering
- / Tow pin
- / Rear-view mirror on right & left mudguards
- / Integrated joystick
- / Adjustable steering column
- / Adjustable armrest
- / Four-way hydraulic valve
- / Operation proportion control
- / Operator presense system (OPS) with buzzer
- / LCD display screen
- / Main power switch
- / Emergency power off switch
- / Built in sideshift (14-18t)
- / Maintenance-free 24V lead acid battery
- / Reverse buzzer
- / High decible horn
- / LED lights (entire vehicle)
- / 2 x Working light on front mudguard
- / 2 x Front working light on top of cabin
- / 2 x Rear working light on top of cabin
- / 2 x Working light on both sides of mast
- / Reverse sensor
- / Rearview camera system
- / Flashing warning light (non rotating) with control switch
- / On-board diagnostics system
- / Water cooling system for lithium battery
- / Automatic fire suppression system for lithium battery pack
- / Manual service disconnect (MSD) switch
- / High voltage interlock
- / Insulation protection
- / Power-on self-test
- / Energy recovery (braking regeneration)
- / Vehicle control unit (VCU)
- / Hour meter
- / Battery charge indicator
- / Low hydraulic pressure alarm indicator
- / Hydraulic oil filter warning indicator
- / Drive mode indicator
- / Parking brake indicator
- / Service indicator
- / Cabin
- / Climate control system (air-conditioning and heater)
- / Manual tilting cabin
- / Electric tilting cabin
- / Radio
- / Sunshade
- / USB charging interface
- / Clothes hanger hook
- / Reading light
- / Fan

Options

- / Optional lifting height
- / Other fork specifications
- / Fork hook on type
- / Built in sideshift(12-16t)
- / Integrated sideshift
- / User defined colour
- / Fire extinguisher (2kg/4kg)
- / Solid tyre
- / Centralized lubrication system (machine)
- / Electrostatic discharge chain
- / Independently-adjustable fork(14-18t)
- / Rearview camera system with memory
- / Front & rearview camera system
- / Front & rearview camera system with memory
- / 4 directions camera system with single display
- / 4 directions camera recording system with single display
- / In cabin CCTV
- / Rear blue safety light
- / Front and rear blue safety light
- / Three sided blue danger zone light
- / Overspeed alarm
- / Speed limitation
- / Voice reverse alarm
- / Automatic fire suppression system
- / Two-way radio
- / Weight indicator in display
- / Tyre pressure monitoring
- / Turning deceleration
- / 1 x 24V power supply
- / 1 x 12V power supply
- / License plate frame



XH Series 12-16t High-voltage Lithium Battery Forklift Specification

Distinguishing mark	1.1	Manufacturer		HANGCHA GROUP CO.,LTD.		
	1.2	Manufacturer's type designation		CPD120-XHXL2G	CPD140-XHXL2G	CPD160-XHXL2G
	1.3	Drive: electric (battery or mains), diesel, petrol, fuel gas		Electric	Electric	Electric
	1.4	Operator type: hand, pedestrian, standing, seated, order-picker		Seated	Seated	Seated
	1.5	Rated capacity/rated load	Q (kg)	12000	14000	16000
	1.6	Load centre distance	c (mm)	600	600	600
	1.8	Load distance, centre of drive axle to fork	x (mm)	746	825	825
	1.9	Wheelbase	y (mm)	3100	3100	3100
	Weight	2.1	Service Weight	kg	17000	19400
2.2		Axle loading, laden front/rear	kg	24590/3410	30200/3200	32800/3700
2.3		Axle loading, unladen front/rear	kg	8300/8700	9700/9700	9430/11070
Tyres, chassis	3.1	Tyres: solid rubber, superelastic, pneumatic, polyurethane		pneumatic	pneumatic	pneumatic
	3.2	Tyre size, front		10.00-20-18PR	11.00-20-18PR	12.00-20-20PR
	3.3	Tyre size, rear		10.00-20-18PR	11.00-20-18PR	12.00-20-20PR
	3.5	Wheels, number front / rear (x = driven wheels)		4x/2	4x/2	4x/2
	3.6	Tread, front	b10 (mm)	1780	1780	1780
	3.7	Tread, rear	b11 (mm)	1890	1890	1890
Dimensions	4.1	Tilt of mast/fork carriage forward/backward	α/β(°)	6/12	6/12	6/12
	4.2	Height, mast lowered	h1 (mm)	3180	3270	3290
	4.4	Lift	h3 (mm)	3000	3000	3000
	4.5	Height, mast extended	h4 (mm)	4695	4790	4790
	4.7	Height of overhead guard (cabin)	h6 (mm)	3265	3280	3300
	4.8	Seat height/stand height	h7 (mm)	1925	1940	1960
	4.12	Coupling height	h10 (mm)	538	553	573
	4.19	Overall length	l1 (mm)	6190	6260	6350
	4.20	Length to face of forks	l2 (mm)	4690	4760	4850
	4.21	Overall width	b1 (mm)	2460	2460	2460
	4.22	Fork dimensions	s/e/l (mm)	80/200/1500	90/200/1500	90/200/1500
	4.24	Fork-carriage width	b3 (mm)	2372	2372	2372
	4.25	Distance between fork-arms	b5 (mm)	520/2200	520/2200	520/2200
	4.31	Ground clearance, laden, below mast	m1 (mm)	235	250	270
	4.32	Ground clearance, centre of wheelbase	m2 (mm)	220	235	255
	4.34.1	Aisle width for pallets crossways	As1 (mm)	6795	6875	6975
	4.35	Turning radius	Wa (mm)	4350	4350	4450
Performance data	5.1	Travel speed, laden/unladen	km/h	23/25	23/25	26/27
	5.2	Lift speed, laden/unladen	m/s	0.4/0.5	0.35/0.45	0.35/0.4
	5.6	Max. Drawbar pull, laden/unladen	N	100000	100000	100000
	5.8	Max. gradeability, laden/unladen	%	30/30	30/30	25/25
	5.10	Service brake		Wet disc brake system(WDB)	Wet disc brake system(WDB)	Wet disc brake system(WDB)
		Parking brake		Spring Applied,Hydraulic release multidisc brake(SAHR)		
Electric drivetrain	6.1	Drive motor rating S9 60 min Rated/Peak	kW	120/240	120/240	120/240
	6.2	Lift motor rating at S9 15% Rated/Peak	kW	2x50/100	2x50/100	2x50/100
	6.4	Battery Capacity	kWh / Ah	123/228	123/228	123/228
		Nominal Voltage	V	541	541	541
	6.5	Battery weight	kg	1100	1100	1100
		Battery dimensions	l/b/h(mm)	1884/715/629	1884/715/629	1884/715/629
		Max. battery weight	kg	1500	1500	1500
Addition data	10.1	Operating pressure for attachments	Mpa	14	14	14
	10.3	Hydraulic Tank - capacity (drain & refill)	liter	260	260	260
	10.7	Sound pressure level at the driver ´s seat	dB (A)	71	71	71
	10.8	Towing coupling, type DIN 15170		Φ 40Pin	Φ 40Pin	Φ 40Pin

12-16t Mast Specification

Type	Model	Lifting height	Overall height				Tilt range	Capacity			
			Lowered		Extended			F/R	Load center@600mm		
			12t	14/16t	12t	14/16t			12t	14t	16t
			mm	mm	mm	mm			kg	kg	kg
2-stage wide view mast	GXR120/160M300	3000	3180	3290	4695	4790	6/12	12000	14000	16000	
	GXR120/160M330	3300	3330	3440	4995	5090	6/12	12000	14000	16000	
	GXR120/160M360	3600	3480	3590	5295	5390	6/12	12000	14000	16000	
	GXR120/160M400	4000	3680	3790	5695	5790	6/12	12000	14000	16000	
	GXR120/160M430	4300	3880	3990	6030	6140	6/12	12000	14000	16000	
	GXR120/160M450	4500	3980	4090	6230	6340	6/12	12000	14000	16000	
	GXR120/160M480	4800	4130	4240	6530	6640	6/6	12000	14000	16000	
	GXR120/160M500	5000	4230	4340	6730	6840	6/6	12000	14000	16000	
	GXR120/160M550	5500	4530	4640	7280	7390	3/6	10500	12500	14500	
	GXR120/160M600	6000	4780	4890	7780	7890	3/6	9000	11000	13000	
	GXR120/160M650	6500	5080	5190	8330	8440	3/6	7500	9500	11500	

