



**ZHEJIANG HANGCHA IMP. & EXP. CO., LTD.**

**Factory site:** 666 Xiangfu Road,  
Hangzhou, Zhejiang, China (311305)

Tel: +86-571-88926735 88926755  
Fax: +86-571-88926789 88132890

sales@hcforklift.com  
www.hcforklift.com



Follow us on  
Facebook



Follow us on  
YouTube



Follow us on  
WeChat



Download "Hangcha  
Forklift" App



ISO14001  
ISO14001:2015



ISO9001  
ISO9001:2015



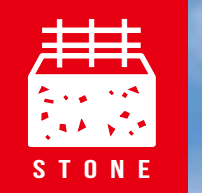
HANGCHA trucks conform  
to the European Safety  
Requirements.

HANGCHA GROUP CO., LTD. reserves the right to make any changes without notice concerning colors, equipment, or specifications detailed in this brochure, or to discontinue individual models. The colors of trucks, delivered may differ slightly from those in brochures.

2022 VERSION 4/COPYRIGHT 2022/04

# X Series IC Forklift Truck For Work In Stone Industry

with capacities of 5,500kg



*The World of Hangcha*  
SINCE 1956





# X Series IC Forklift Truck For Work In Stone Industry

The X series 5t stone forklift, based on the X series, retains the existing highlights of the X series. By adoption of a differentiated competitive strategy according to the characteristics of the stone market working conditions, it improves product performance in terms of load capacity, reliability, heat dissipation capacity, braking capacity, dust and water resistance, surpassing competing products.

Model Number	Rated lifting capacity	Load center distance	Engine Model/Power/Torque	Remark
CPCD55-XRXG73BN-S	5500kg	500mm	4D32RG30-001-005 60kW/2200r/min 320N·m/1500~1700r/min	New products
CPCD55-XRXG76BN-S			YC4DK75-T303 55kW/2200r/min 315N·m/1400~1700r/min	

## Product Highlights

### Stable and reliable braking

- / Wet braking, maintenance-free
- / Good braking of the axle housing

### Strong impact resistance

- / Enhanced mast
- / Enhanced frame
- / More stable tilt cylinder

### Heavy-duty operating conditions

#### Strong adaptability

- / 5.5T rated load
- / High-pressure common-rail engine
- / Okamura floating hydraulic transmission
- / Single-pump unloading multi-way valve

### Novel and stylish appearance

- / A continuation of the X Series appearance features

### Energy saving and high efficiency

- / High-pressure system, two pumps converging

### Better comfort

- / Floating hydraulic transmission, big surrounded chair, simple and convenient for operations and pick-up

### Good resistance to dust and sand

- / Double paper air filter, protective board of heat dissipater
- / High-mounted breather, steering cylinder jacket, tilt cylinder jacket







### Stable and reliable braking

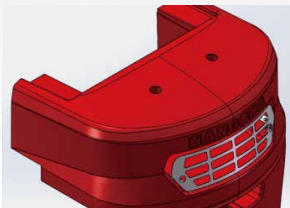
- / Highly load-bearing and fully enclosed wet brake drive axle, isolated from sand, oil stains and other harsh environmental influences, realizing high reliability, stable braking, maintenance free and semi-permanent life.
- / The axle housing with a safety bearing factor of 3.7 times exhibits high bearing capacity.



Wet braking drive axle

### Strong adaptability to heavy-duty operating conditions

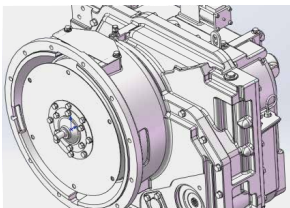
- / 5.5T rated load, 2100mm wheel base, showing large load capacity and excellent stability.
- / 315N·m high torque and high-pressure common-rail engine, displaying strong explosive power.
- / Okamura floating hydraulic transmission exhibiting outstanding performance and better adaptability to high-intensity operating conditions.
- / The single-pump unloading multi-way valve is applied to show high-efficiency and energy-saving performance, and low hydraulic oil temperature, greatly improving the hydraulic system reliability and prolonging the service life.



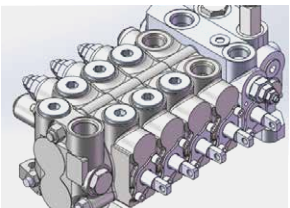
Counterweight



High-pressure common-rail engine



Okamura transmission



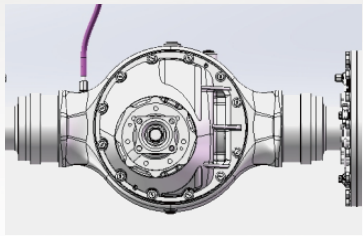
Multiway valve

### Good resistance to dust and sand

- / Fully enclosed wet brake, high-mounted drive axle breather, steering cylinder jacket, tilt cylinder jacket, double paper air filter, protective board of heat dissipater, waterproof connector and other parts can reduce or isolate the influence of harsh environment such as sand, oil stain and dust, which can perfectly adapt to the harsh environment such as dust and sand.



Wet brake



Breather



Waterproof connector



Piston rod sleeve



Double paper air filters



Protective board of heat dissipater



## Strong Impact Resistance

/ By using special reinforced side rollers, The bearing capacity of mast roller is increased by 30%, reinforced plates are added to the upper/lower beams of the outer mast, the rear end of the channel steel and the tilt cylinder seat to four groups to improve the overall strength of the mast and increase the impact resistance.



Mast assembly

/ Two reinforcement bars and arc flitch plates are added to the opposite side of the cylinder support, the front and rear lower cross members of the frame are widened and the cambered plate is welded to the steering axle mounting plate and the lower beam to strengthen the key impact bearing position.



Frame



Tilt cylinder piston rod adopts 5-7t



Special bolt

## Better comfort

/ The floating hydraulic transmission has low vibration, the big surrounded chair is comfortable to sit, the wet brake and electric steering are easy to operate, the mast tilting angle is 9°/9°, thus it is more convenient to fork and pick up goods in the stone market.



Big surrounded chair

## Energy saving and high efficiency

/ High-pressure system, multi-way valve steering priority, single-pump unloading, two pumps converging and other technologies, high efficiency and energy saving, low oil temperature, easy to operate.



High-pressure system, two pumps converging

## Options

- / Cab
- / Heater
- / Air condition
- / Solid tyre
- / Suspension seat
- / Warning light
- / Fire extinguisher
- / Rear working light





X Series 5.5t IC Forklift Truck For Work In Stone Industry Specification

Distinguishing mark	1.1	Manufacturer		HANGCHA GROUP CO.,LTD.	
	1.2	Manufacturer's type designation		CPCD55-XXRG73BN-S	CPCD55-XXRG76BN-S
	1.3	Drive: electric (battery or mains), diesel, petrol, fuel gas		Diesel	Diesel
	1.5	Rated capacity/rated load	Q (kg)	5500	5500
	1.6	Load centre distance	c (mm)	500	500
	1.8	Load distance, centre of drive axle to fork	x (mm)	555	555
		Rear overhang	mm	600	600
	1.9	Wheelbase	y (mm)	2100	2100
	2.1	Service Weight	kg	7200	7200
Weight	2.2	Axle loading, laden front/rear	kg	11250/1450	11250/1450
	2.3	Axle loading, unladen front/rear	kg	3000/4200	3000/4200
Tyres, chassis	3.2	Tyre size, front		300-15-20PR/2	300-15-20PR/2
	3.3	Tyre size, rear		7.00-12-14PR/2	7.00-12-14PR/2
	3.6	Tread, front	b10 (mm)	1190	1190
	3.7	Tread, rear	b11 (mm)	1130	1130
Dimensions	4.1	Tilt of mast/fork carriage forward/backward	α/β(°)	9/9	9/9
	4.2	Height, mast lowered	h1 (mm)	2270	2270
	4.3	Free lift	h2 (mm)	165	165
	4.4	Lift	h3 (mm)	3000	3000
	4.5	Height, mast extended	h4 (mm)	4225	4225
	4.7	Height of overhead guard (cabin)	h6 (mm)	2310	2310
	4.20	Length to face of forks	l2 (mm)	3255	3255
	4.21	Overall width	b1 (mm)	1490	1490
	4.22	Fork dimensions	s/e/l (mm)	1070×150×60	1070×150×60
	4.31	Ground clearance, laden, below mast	m1 (mm)	170	170
	4.32	Ground clearance, centre of wheelbase	m2 (mm)	230	230
	4.33	Aisle width for pallets 1000 x 1200 crossways	Ast (mm)	4635	4635
	4.34	Aisle width for pallets 800 x 1200 lengthways	Ast (mm)	4835	4835
	4.35	Turning radius	Wa (mm)	2880	2880
Performance data	5.1	Travel speed, laden/unladen	km/h	23/25	23/25
	5.2	Lift speed, laden/unladen	m/s	0.53/0.56	0.53/0.56
	5.3	Lowering speed, laden/unladen	m/s	0.5/-	0.5/-
	5.5	Drawbar pull, laden/unladen	N	39500/	38500/
	5.7	Gradeability, laden/unladen*	%	20	20
Combustion-engine	7.1	Engine manufacturer/type		XINCHAI 4D32RG30	YC4DK75-T303
		Emission STD		Stage3	Stage3
	7.2	Engine power according to DIN ISO 1585	kw	60	55
	7.3	Rated speed	Min	2200	2200
	7.4	Number of cylinders/displacement	(-)/(cm³)	4/3168	4/3621
	7.10	Battery voltage/nominal capacity	V/Ah	12/105	24/60
		Rated torque	N·m/r/min	320/1500-1700	315/1400-1700
		Bore × stroke	mm	98×105	98×120
		Transmissions Manufacturer		CHINA	CHINA
		Transmissions Type		Power shift	Power shift
Addition data	10.1	Operating pressure for attachments	bar	230	230
	10.4	Fuel tank capacity	liter	90	90

Note: \* With suspension seat or cabin  
\* As a calculated value

Mast Specification

Type	Model	Max. fork height	Extended height			Free lift height		Front Overhang	Tilt range	Capacity	
			Lowered	Extended		Without backrest	With backrest		FWD/RWD	Load Capacity at 500mm	
				Without backrest	With backrest					Single tire	Double tire
		mm	mm	mm	mm	mm	mm	mm	(°)	kg	kg
Wide view Duplex mast	XR555M245	2450	1995	3310	3720	160	160	557	9/9	5500	5500
	XR555M265	2650	2095	3510	3920	160	160	557	9/9	5500	5500
	XR555M300	3000	2270	3860	4270	160	160	557	9/9	5500	5500
	XR555M330	3300	2445	4160	4570	160	160	557	9/9	5500	5500
	XR555M350	3500	2545	4360	4770	160	160	557	9/9	5500	5500
	XR555M360	3600	2595	4460	4870	160	160	557	9/9	5500	5500
	XR555M370	3700	2645	4560	4970	160	160	557	6/6	5500	5500
	XR555M400	4000	2870	4870	5270	160	160	557	6/6	5500	5500
	XR555M430	4300	3020	5170	5570	160	160	557	6/6	5150	5400
	XR555M450	4500	3120	5370	5770	160	160	557	6/6	5000	5200
	XR555M470	4700	3220	5570	5970	160	160	557	6/6	4650	4750
	XR555M480	4800	3345	5745	6070	160	160	557	6/6	4650	4750
	XR555M500	5000	3445	5945	6270	160	160	557	6/6	4400	4600
	XR555M550	5500	3695	6445	6770	160	160	557	3/6	4050	4300
	XR555M600	6000	3945	6945	7270	160	160	557	3/6	3150	3350
Free duplex wide-view mast	XR555U245	2450	2000	3310	3720	1140	730	564	9/9	5500	5500
	XR555U265	2650	2100	3510	3920	1240	830	564	9/9	5500	5500
	XR555U300	3000	2275	3860	4270	1415	1005	564	9/9	5500	5500
	XR555U330	3300	2425	4160	4570	1565	1155	564	9/9	5500	5500
	XR555U350	3500	2525	4360	4770	1665	1255	564	9/9	5500	5500
	XR555U370	3700	2625	4560	4970	1765	1355	564	9/9	5500	5500
	XR555U400	4000	2850	4860	5270	1990	1580	564	9/9	5500	5500
Free triplex wide-view mast	XR555N365	3650	2000	4510	4920	1140	730	607	9/9	5500	5500
	XR555N400	4000	2100	4860	5270	1240	830	607	9/9	5500	5500
	XR555N430	4300	2205	5160	5570	1345	935	607	6/6	5000	5200
	XR555N450	4500	2275	5360	5770	1415	1005	607	6/6	4750	4900
	XR555N470	4700	2340	5560	5970	1480	1070	607	6/6	4600	4800
	XR555N480	4800	2425	5660	6070	1565	1155	607	6/6	4450	4650
	XR555N500	5000	2475	5860	6270	1615	1205	607	6/6	4200	4500
	XR555N550	5500	2625	6360	6770	1765	1355	607	3/6	3850	4100
	XR555N600	6000	2850	6860	7270	1990	1580	607	3/6	3050	3250
	XR555N650	6500	3100	7360	7770	2240	1830	607	3/6	/	2900
	XR555N700	7000	3325	7860	8270	2465	2055	607	3/6	/	2550

